

How to pass column value as a table name in the child qlet

Example: You have a parent qlet which lists all the interface tables and the number of rows in it. The following screenshot shows be a list of interface error tables and the count of errored rows. This is achieved using a series of union selects from the appropriate error tables.

< Interface Errors > [-]

(++Drill) Table Name	Error Count
ce_header_interface_erro...	0
ce_line_interface_errors	0
cst_interface_errors	0
hz_party_interface_errors	0
igc_cc_interface_errors	0
ipa_apis_interface_errors	0
mtl_cc_interface_errors	0
mtl_interface_errors	31126
oe_exp_interface_errors	0
pon_interface_errors	0
po_interface_errors	11433
qa_interface_errors	0
qp_interface_errors	0
ra_interface_errors_all	199
wip_interface_errors	0
wip_txn_interface_errors	0
wsh_interface_errors	0
wsm_interface_errors	0
xtr_interface_errors	0
xxls_interface_errors	723

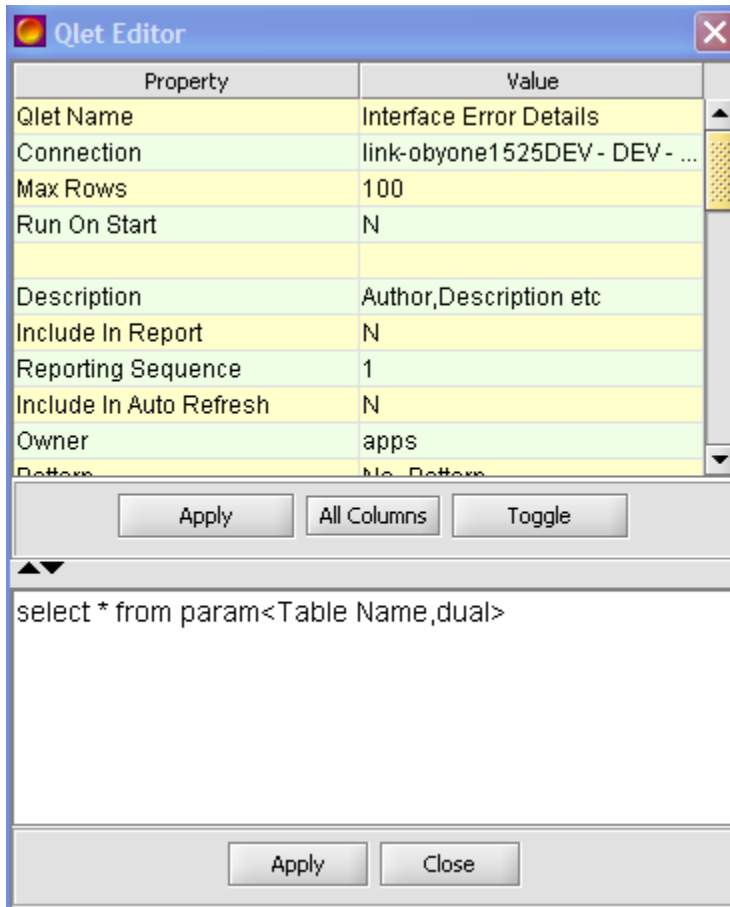
```

select lower(interface_table) table_name, error_count
from
(
select 'QA_INTERFACE_ERRORS' Interface_Table ,count(*) Error_count from QA_INTERFACE_ERRORS union
select 'HZ_PARTY_INTERFACE_ERRORS' Interface_Table ,count(*) Error_count from HZ_PARTY_INTERFACE_ERRORS union
select 'MTL_CC_INTERFACE_ERRORS' Interface_Table ,count(*) Error_count from MTL_CC_INTERFACE_ERRORS union
select 'PO_INTERFACE_ERRORS' Interface_Table ,count(*) Error_count from PO_INTERFACE_ERRORS union
select 'CST_INTERFACE_ERRORS' Interface_Table ,count(*) Error_count from CST_INTERFACE_ERRORS union
select 'WIP_TXN_INTERFACE_ERRORS' Interface_Table ,count(*) Error_count from WIP_TXN_INTERFACE_ERRORS union
select 'WIP_INTERFACE_ERRORS' Interface_Table ,count(*) Error_count from WIP_INTERFACE_ERRORS union
select 'XTR_INTERFACE_ERRORS' Interface_Table ,count(*) Error_count from XTR_INTERFACE_ERRORS union
select 'CE_LINE_INTERFACE_ERRORS' Interface_Table ,count(*) Error_count from CE_LINE_INTERFACE_ERRORS union
select 'CE_HEADER_INTERFACE_ERRORS' Interface_Table ,count(*) Error_count from CE_HEADER_INTERFACE_ERRORS union
select 'OE_EXP_INTERFACE_ERRORS' Interface_Table ,count(*) Error_count from OE_EXP_INTERFACE_ERRORS union
select 'QP_INTERFACE_ERRORS' Interface_Table ,count(*) Error_count from QP_INTERFACE_ERRORS union
select 'WSH_INTERFACE_ERRORS' Interface_Table ,count(*) Error_count from WSH_INTERFACE_ERRORS union
select 'IPA_APIS_INTERFACE_ERRORS' Interface_Table ,count(*) Error_count from IPA_APIS_INTERFACE_ERRORS union
select 'WSM_INTERFACE_ERRORS' Interface_Table ,count(*) Error_count from WSM_INTERFACE_ERRORS union
select 'IGC_CC_INTERFACE_ERRORS' Interface_Table ,count(*) Error_count from IGC_CC_INTERFACE_ERRORS union
select 'XXLS_INTERFACE_ERRORS' Interface_Table ,count(*) Error_count from XXLS_INTERFACE_ERRORS union
select 'PON_INTERFACE_ERRORS' Interface_Table ,count(*) Error_count from PON_INTERFACE_ERRORS union
select 'MTL_INTERFACE_ERRORS' Interface_Table ,count(*) Error_count from MTL_INTERFACE_ERRORS union
select 'RA_INTERFACE_ERRORS_ALL' Interface_Table ,count(*) Error_count from RA_INTERFACE_ERRORS_ALL
)
order by interface_table

```

This particular view gives some good information but it would be nice to have the ability to drill directly into the corresponding table and look into the actual errored out rows.

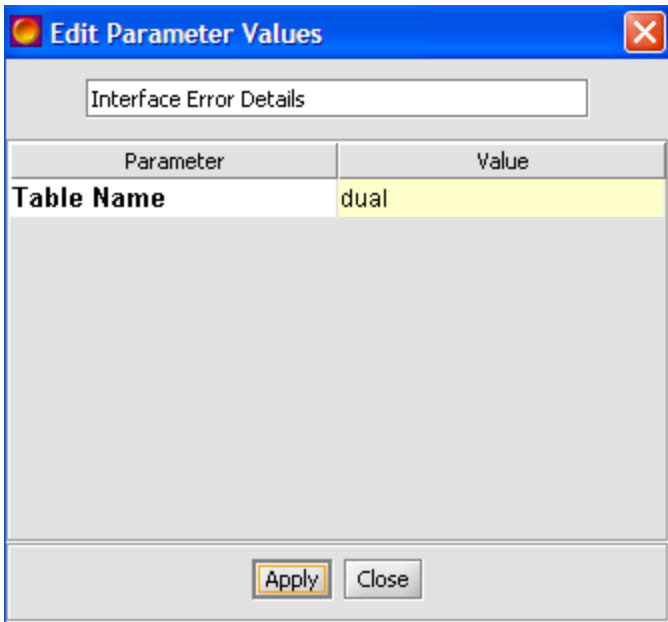
This can be achieved by creating a child Qlet as shown below



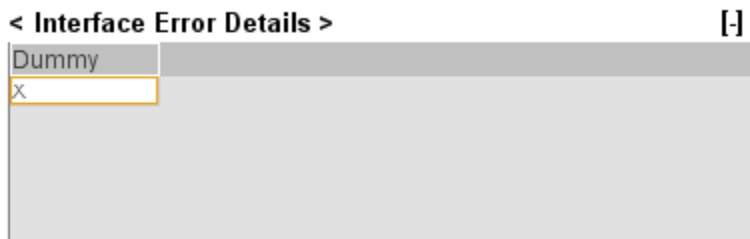
The above child qlet has the following SQL  
**“select \* from param<Table Name,dual>”**

which means it will accept the table name as parameter and dynamically query the passed table name. The name of the Qlet filter/parameter is “Table Name” and the default value is “dual”.

In Oracle database, **dual** is the dummy table which contains exactly one row and one column. You can give any table name as the default value. When you first create it and then apply, the child qlet will prompt you with the parameter as below



You can enter any table name (replacing dual) and it should shown the information.



NOTE: make sure to set the “Run on Start=N” for the new child Qlet. This way it won’t prompt you for the parameters when you launch the dashboard

NEXT...

Create a drill from the parent Qlet to the newly created Child Qlet

Right Click on any cell on the “Table Name” column of the “Interface Errors” Qlet  
Select “Column Settings”

< Interface Errors > [-]

(++Drill) Table Name	Error Count
ce_header_interface_erro...	0
ce_line_interface_erro...	0
cst_inte	0
hz_part	0
igc_cc	0
ipa_api	0
mtl_cc	0
mtl_inte	31126
oe_exp	0
pon_interface_errors	0
no_interface_errors	11133

Drill Into

- Edit
- Refresh
- Export
- Column Settings
- Launch URL

Select "Drill Settings" Tab  
Click "Add" to create new drill

**Column Settings**

TABLE\_NAME

Column Settings | **Drill Settings**

Error Details, ID:q101

**Drill Editor**

Drill Name: Error Details

Drill into: Interface Error Details

Parameter	Value
Table Name	TABLE_NAME

Add

Done and Close

Select "Interface Error Details" as the Drill into Qlet  
In the parameter Value, select the "TABLE\_NAME" from the available list of columns  
Click "Done and Close"

Now you are ready to drill for any table  
 Right click on any table name

< Interface Errors > [-]

(++Drill) Table Name	Error Count
ce_header_interface_erro...	0
ce_line_interface_errors	0
cst_interface_errors	0
hz_party_interface_errors	0
igc_cc_int...	0
ipa_apis_in...	0
mtl_cc_int...	0
mtl_interfa...	31126
oe_exp_int...	0
pon_interfa...	0
po_interfac...	11433
qa_interface_errors	0
qp_interface_errors	0

Context menu for 'mtl\_interfa...':

- Drill Into ▶ Error Details
- Edit
- Refresh
- Export
- Column Settings
- Launch URL

Select the drill name “Error Details”

The result will be shown as below

mtl_interface_errors	31126
oe_exp...	0
pon_int...	0

Context menu for 'mtl\_interface\_errors':

- Drill Into ▶
- Edit

**Interface Error Details** (TABLE\_NAME = mtl\_interface\_errors) [-]

Organization Id	Transaction Id	Unique Id	Last Update Date	Last Updated By	Creation Date	Created By	Last Update Login	Table Name	Message Name	Column Name
236	206262	206263	12-Jun-2006	4273	12-Jun-2006	4273	-1	MTL_ITEM_...	INV_IOI_RE...	EFF2
236	206272	206273	12-Jun-2006	4273	12-Jun-2006	4273	-1	MTL_ITEM_...	INV_IOI_RE...	EFF2
236	206282	206283	12-Jun-2006	4273	12-Jun-2006	4273	-1	MTL_ITEM_...	INV_IOI_RE...	EFF2
236	206292	206293	12-Jun-2006	4273	12-Jun-2006	4273	-1	MTL_ITEM_...	INV_IOI_RE...	EFF2
236	206302	206303	12-Jun-2006	4273	12-Jun-2006	4273	-1	MTL_ITEM_...	INV_IOI_RE...	EFF2

Similarly right click on any other cell

oe_exp_interface_errors	0
pon_interface_errors	0
po_interface_errors	41,122
qa_interface_errors	0
qp_interface_errors	0
ra_interface_errors	99
wip_interface_errors	0
wip_txn_interface_errors	0
wsh_interface_errors	0
wsm_interface_errors	0
xtr_interface_errors	0

< Interface Error Details > ( TABLE\_NAME = po\_interface\_errors )

Interface Type	Interface Transaction Id	Column Name	Error Message	Processing Date	Creation Date	Created By	Last Update Date	Last Updated By	Last Update Login	Re
RECEIVING	424		RVTII-030: S...	05-Jul-2002	05-Jul-2002	1102	05-Jul-2002	1102	1102	
RECEIVING	483		RVTII-030: S...	05-Jul-2002	05-Jul-2002	1100	05-Jul-2002	1100	1100	
RECEIVING	11805		RVTII-030: S...	31-Jul-2002	31-Jul-2002	1100	31-Jul-2002	1100	88952	1
RECEIVING	11807		RVTII-030: S...	31-Jul-2002	31-Jul-2002	1100	31-Jul-2002	1100	88952	1
RECEIVING	12013		RVTII-030: S...	02-Aug-2002	02-Aug-2002	1100	02-Aug-2002	1100	1100	1
RECEIVING	13384		RVTII-030: S...	03-Aug-2002	03-Aug-2002	1100	03-Aug-2002	1100	97289	13

This ends the tutorial.