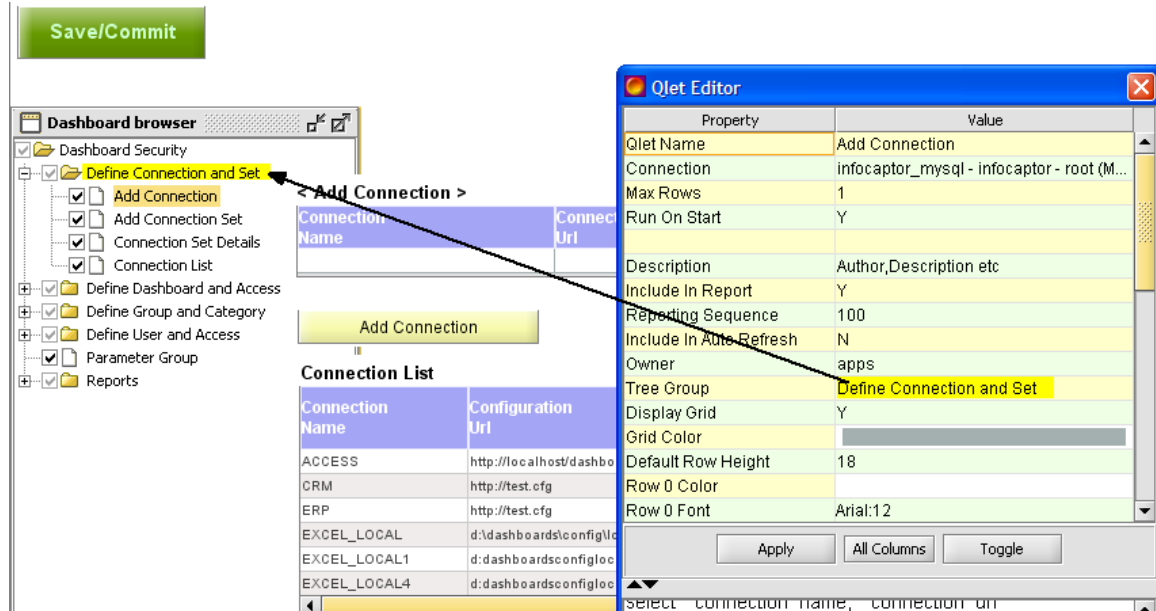


How to group portlets under a common node



The new and easy way of doing this is to assign a common node name in the “Tree Group” property of the individual Qlet or Glet.

You may still follow the old way as mentioned below as it may be applicable in certain situation.

This document illustrates and answers the following situations

How to group common Qlets or Glets ?

How to create a common node in the Dashboard Browser tree?

Both of the above questions have the same solution as mentioned below.

Lets say we created a bunch of Qlets as shown below

DB Instance [-]

Instance Number	Instance Name	Host Name	Version	Startup Time
1	DEV	link-obyone	9.2.0.7.0	08-Oct-2007

DB SGA [-]

Name	
Fixed Size	
Variable Size	197
Database Buffers	88
Redo Buffers	

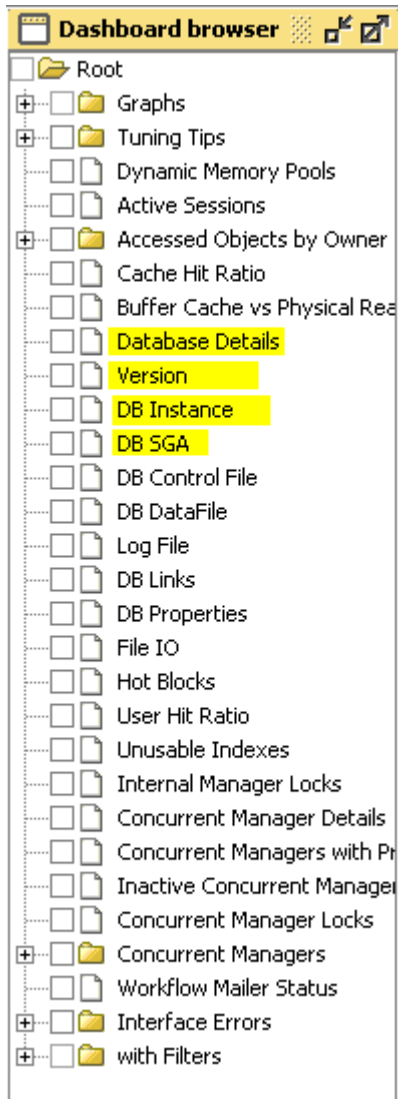
< Database Details > [-]

Dbid	Name	Created	Resetlogs Re Change#	Tit
2586436430	DEV	19-Jul-2007	97688016...	19

Version [-]

Banner
Oracle9i Enterprise Edition Release 9.2.0.7.0 - 64bit
PL/SQL Release 9.2.0.7.0 - Production
CORE9.2.0.7.0Production
TNS for Solaris: Version 9.2.0.7.0 - Production
MLSPDL Version 9.2.0.7.0 - Production

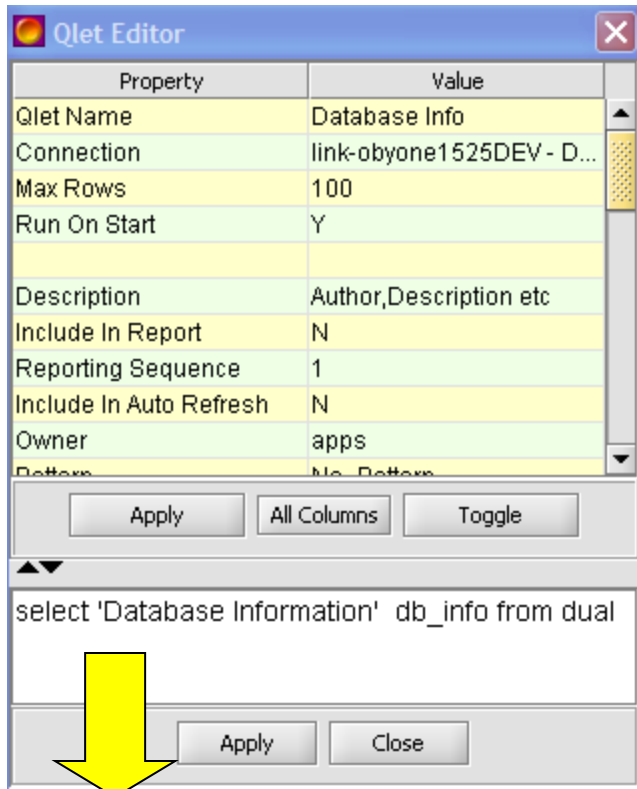
When we launch the Dashboard Tree browser, we see the objects in the tree as below (the yellow highlighted nodes).



Now since these Qlets are independent objects (i.e) they do not have any filters defined nor they are being drilled into from other Qlets they do not appear under any node (except the root node)

In order to create a dummy node say “Database Info” and group all the four objects under this node we will need to perform the following steps

1. First Create a new Qlet with the name “Database Info”



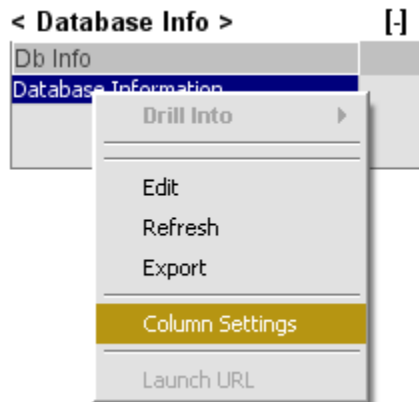
2.



3.

4. Now create a Drill from the “Db Info” column to the other Qlets

5. Right click on the “Db Info” column

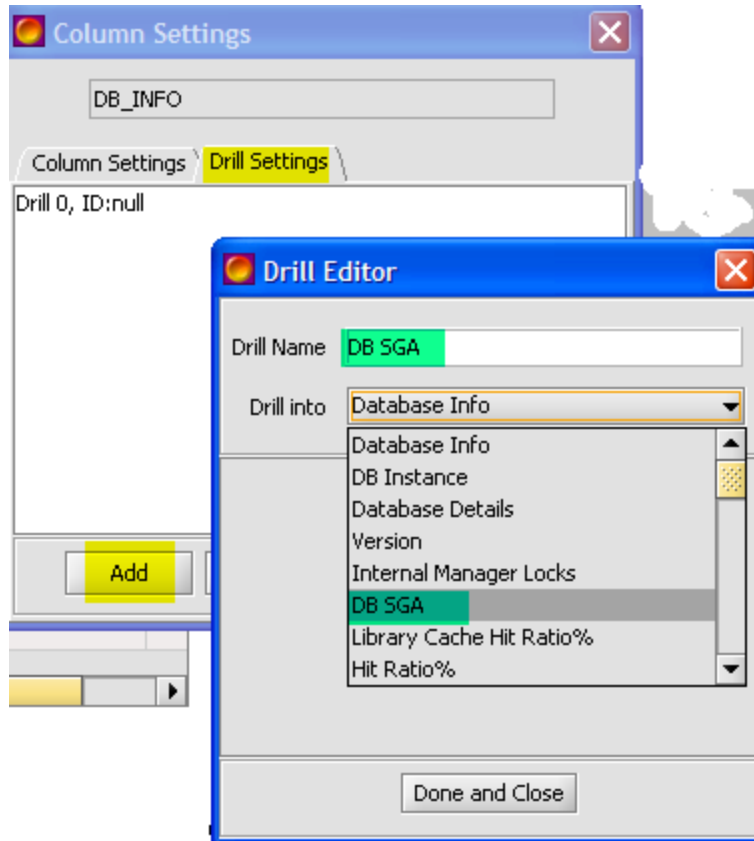


6.

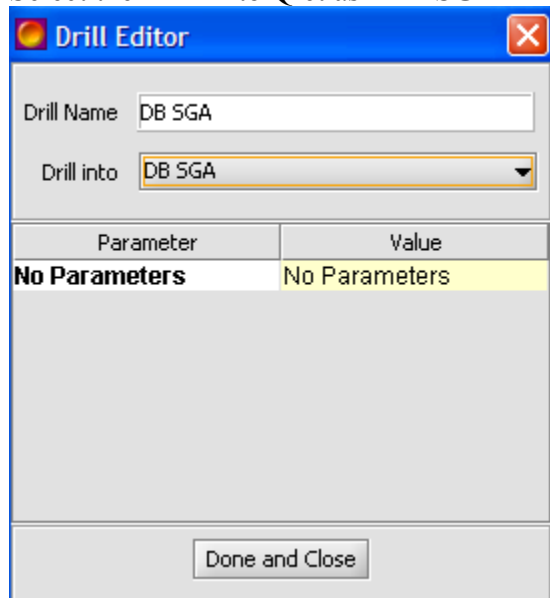
7. Select “Column Settings”

8. Click on the Drill Settings Tab

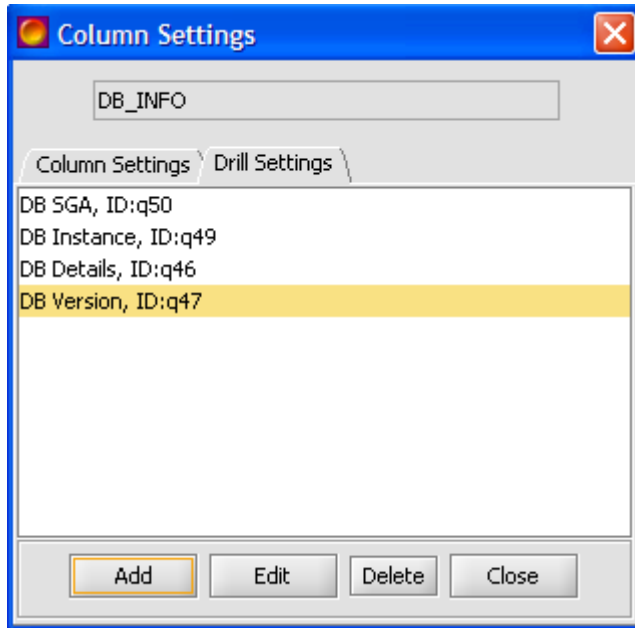
9. Click on the Add button



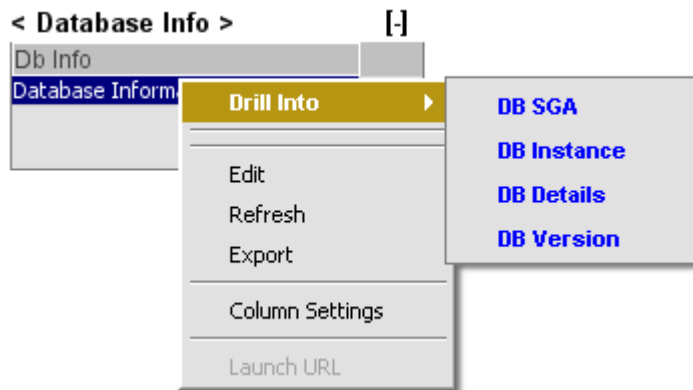
- 10.
11. Enter the Drill Name “DB SGA”
12. Select the Drill Into Qlet as “DB SGA”



- 13.
14. Click on “Done And Close”
15. Repeat steps from “9” (Add new drill) and include all the remaining three Qlets as drillable Qlets



- 16.
17. Once all the drills are defined, click on the Close button
18. Now if you go to the “Database Info” Qlet, right click on the “DB Info” column you can see the following Drills



- 19.
20. Save the dashboard
21. Close the dashboard
22. Re-open the Dashboard
23. Launch the Tree browser
24. You should see the dummy node as the parent to the remaining Qlets as shown below

